

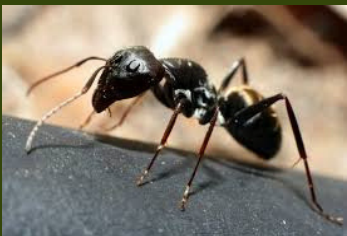
Explore with Park Hop

See if you can find any bugs
around the parks.
Please look but do not touch!

Spider



Ant



Sign up at ParkHop.org
to visit more parks
and win prizes!

#Parkhopfever



@ParkHopGville



@ParkHopGreenville



@livewellgreenville

LiveWell!

Park Hop Adventure #4

Sunset Park



Springfield Park



Sunset Park

211 Fowler Circle
Greenville, SC 29607

Clues*

- Find the Miracle League Playground. What sport is played on the field next to the playground?
- What is the surface of the Miracle League field made of?
- Find the 2nd playground located near the back picnic shelter. Climb up the slide. Instead of stairs, what did you have to climb to reach the top?
- How many window openings are there in the gazebo?

Springfield Park

131 Hyde Circle
Mauldin, SC 29662

Clues*

- In the parking lot, how many "Emergency Vehicle Parking Only" signs do you see?
- Find the football/soccer field bleachers. Climb up a staircase, how many steps to the top?
- Find the playground area with a slide and rocker animal. What is the animal?
- How many baseball and softball fields does Springfield Park have?

Bee



Butterfly



How many bugs did you see?
Draw a picture of your favorite bug's home.

A large white rectangular area intended for drawing a picture of a bug's home.

* Fill out the answers to the clues on the Park Hop Passport at Parkhop.org!